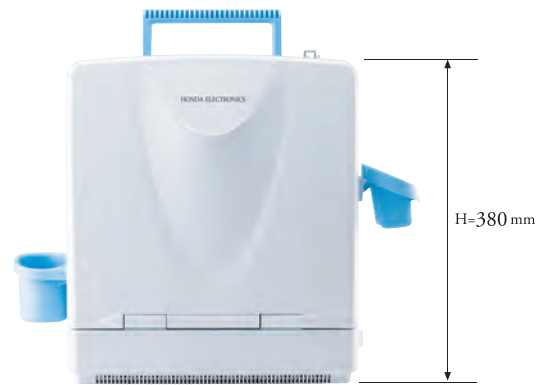
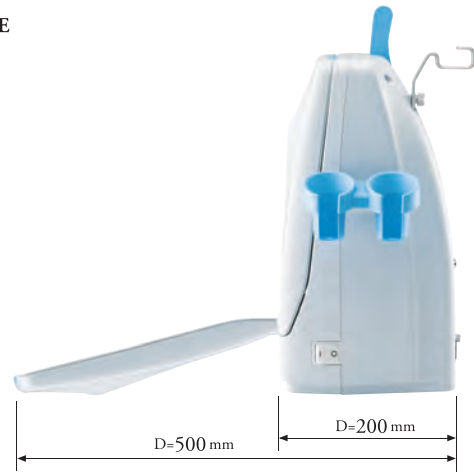


HS-2200

FRONT



SIDE



BACK



Specifications

Scanning Method	Linear/Convex Electronic Scan	
Display Mode	B, B/B, B/Z, B/M, M	
Range	0-20 mm to 0-240 mm (10mm step)	
Focusing Method	Full Digital Beam Forming, Continuous Dynamic Receiving Focus 4 Stage Dynamic Transmission Focus	
Ultrasound Frequency	2.8 to 12.5 MHz	
Display Monitor	12.1" SVGA Color LCD Monitor Wide Viewing Angle(horizontal:170°vertical:170°)	
Image Display	Up/Down, Left/Right, Positive / Negative	
Image Adjustment	B-gain, M-gain	36 to 100 dB 1 dB step
	Dynamic Range	35 to 95 dB 10 dB step(1 dB adjustable)
	STC	8 segments
	Acoustic Power	20% - 100%(10% step)
	Y correction	5 types(max. 10)
	H-res (Image Enhancement)	Soft: OFF and 4 level Edge: OFF and 3 level
	Sweep Speed	5 steps
Cine Memory	255 frames	
Measurement Function	Distance, Circumference / Area, Volume, Hip Joint, Histogram, Gestational Weeks Calculation , EFW, Velocity, LV Calculation	
Character Display	Hospital Name (40), Patient Name (30), ID (10), Age, Sex, DOB, LMP, Date, Time, Probe Type, Range, Gain, Acoustic Power, Dynamic Range, Gamma, H-res, Gray Scale, Frequency, Focus Information	
Probe Connector	2(selected by keyboard)	
Dimension	Approx. 335 (W) × 200 (D) × 380 (H) (mm)(keyboard closed) Approx. 335 (W) × 500 (D) × 380 (H) (mm)(keyboard opened)	
Net Weight	11 kg approx.	
Power Source	100 V~240 V AC 50/60 Hz 150 VA	
Data Storage	Still Image(JPEG)	Internal(100 images max.) External USB Memory
	Moving Image(AVI)	External USB Memory
External I/O	USB Memory Port	×1
	Video Output	×2 Channel(composite video)
	External Monitor	×1 Analog RGB
	Printer Remote Port	×1
	Foot Switch Port	×1
Probes	5.0/3.5/2.8 MHz 60 R Convex probe	HCS-536M HCS-436M
	11.0/8.5/6.0 MHz 40 mm Linear probe	HLS-584M
	10.0/7.5/5.0 MHz 50 mm Linear probe	HLS-575M HLS-475M
	12.5/10.0/7.5 MHz 30 mm Linear probe(Small Parts)	HLS-513M HLS-413
	9.0/7.5/5.0 MHz 12 R Micro-Convex probe	HCS-5712M
	7.0/5.0/3.5 MHz R Micro-Convex probe	HCS-452M
	9.0/7.5/5.0 MHz 10 R Micro-Convex probe	HCS-4710M
	9.0/7.5/5.0 MHz 10 R Micro-Convex probe(Transvaginal 120°)	HCS-5710MV HCS-4710MV
	9.0/7.5/5.0 MHz 10 R Micro-Convex probe (Endorectal 170°)	HCS-5710MR
Options	Video Printer Foot Switch (SFUS- 1GR 1.8 m) Biopsy Guide Water bag (HWB-02, HWB-03) Cassette(HWA-03, HWA-05, HWA-06) Cart	

DIAGNOSTIC SCANNER
Convex / Linear Ultrasonic System

HS-2200

12.1 inch



JAPAN



Attention
•Contents of this catalog are as of November 12, 2021
•The specification and appearance are subject to change without notice for improvement.
•Actual colors of products and colors of this catalog may a little different cause of printing.

HONDA ELECTRONICS CO.,LTD.
Medical Division

20 Oyamazuka, Oiwa-cho, Toyohashi
Aichi 441-3193 Japan
TEL: +81-532-41-2514 FAX: +81-532-41-4441
www.honda-el.net

Registered company for ISO9001/ISO13485/ISO14001



is the trademark of HONDA ELECTRONICS CO.,LTD.
This catalog is printed by vegetable ink on recycle paper.



22-030

November 12, 2021

For human medical
Advanced technology and excellent image
Quality embodied in stylish unit



DIAGNOSTIC SCANNER HS-2200

HS-2200 is a portable, high-resolution, black and white ultrasound imaging system incorporating the latest technologies available into an economical, user-friendly package. High density, multi-frequency transducers provide excellent image quality in rugged field conditions or at the office.

image processing High Quality

What you see is reality!

Our HS-2200 Portable Linear/Convex Ultrasound System, the NEW standard for image quality and user efficiency in various applications of ultrasound procedures.

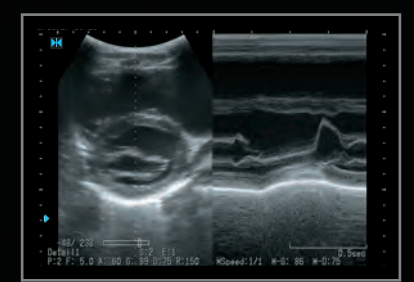
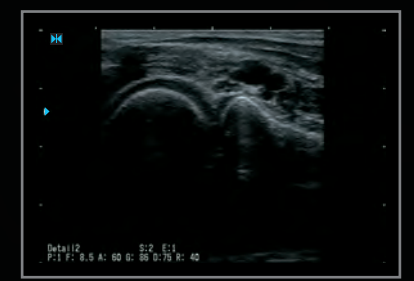
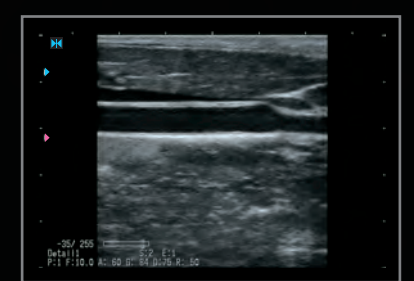
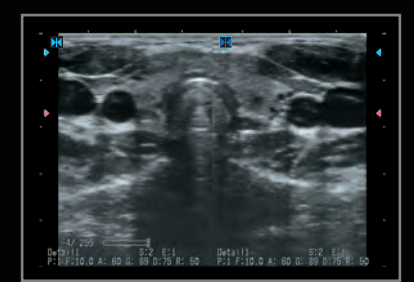
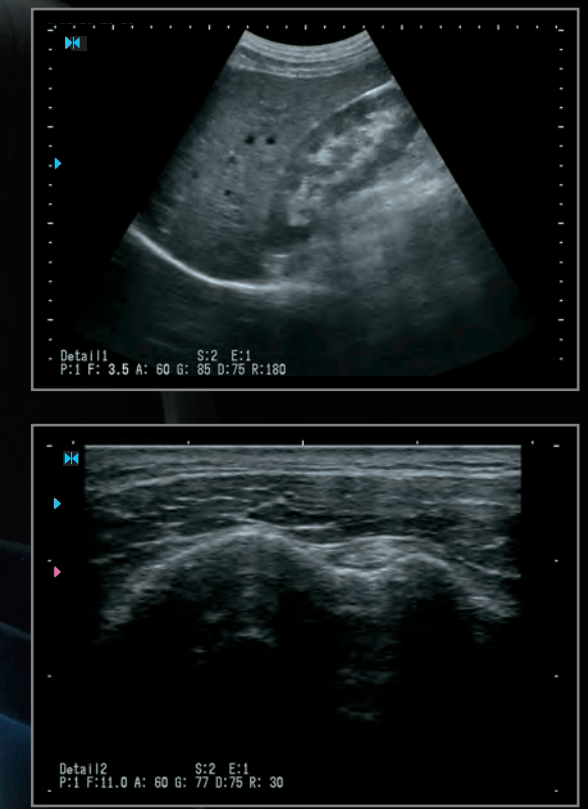
Features

1. Full digital system
2. Sharp and smooth H-res technology
3. 128-channel high resolution probes
4. Wide screen in a compact body
5. Patient database function
6. Moving image storage
7. Compact body, easy to carry



Full Digital System

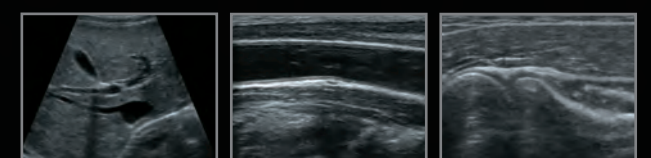
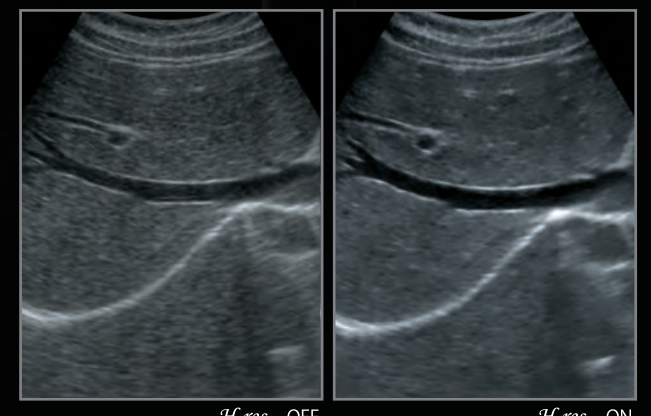
Complete digital technology enables a full range of continuous focus. Every pixel in the screen has optimized focus and the image is crisp and clear.



H-res (Our Resolution Technology)



Advanced image enhancement technology, "H-res™", brings perfect solution for visibility. Detail1 realizes good resolution in deeper organs. Detail2 visualizes delicate tissue construction in shallower parts. Mild suppresses flutters in smaller effect. You can also turn it OFF to have direct signal image.

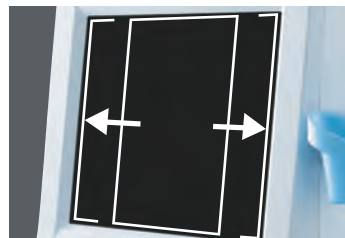




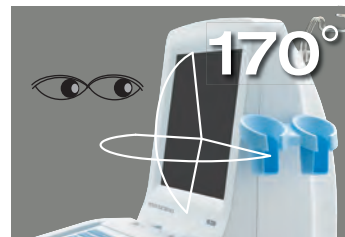
12.1-inch
Absolute wide screen in a compact body.



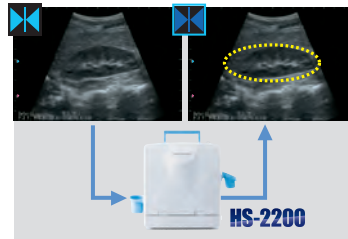
Contrast
Rich gray scale with good linearity gives accurate image.



SVGA 800×600
Wide image display on a standard SVGA screen.



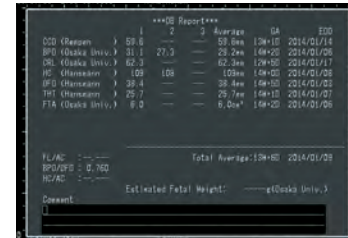
170° Wide viewing angle
enables easy observation in a limited operating environment.



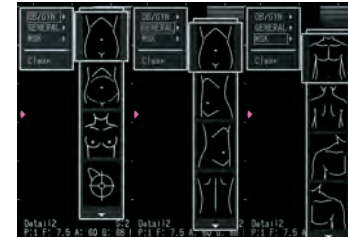
Database
Scanned images can be stored by the patient ID. Measurement of a stored image is also possible.



A-mode
indicates the intensity of echo signal by easy operation.



Report
Measurement results can be displayed in a list for record.



Body Mark
A variety of body marks are prepared to support various observation scenes.

Clear + Contrast Harmonic Imaging



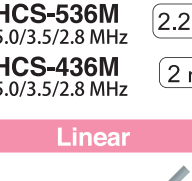
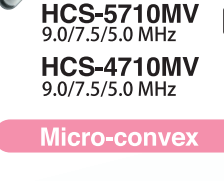


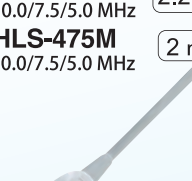

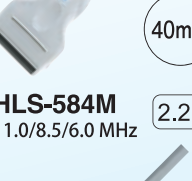
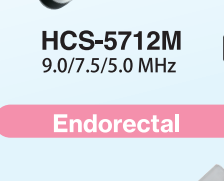


Harmonic imaging technology eliminates the side lobe artifact and brings the clear and identical image of organs with good contrast.



Probes

Multi-frequency imaging allows more procedures to be performed with each transducer.

Wide range of probe selection

Convex	Transvaginal
 <p>HCS-536M 5.0/3.5/2.8 MHz 2.2 m</p>	 <p>HCS-5710MV 9.0/7.5/5.0 MHz 2.2 m</p>
 <p>HCS-436M 5.0/3.5/2.8 MHz 2 m</p>	 <p>HCS-4710MV 9.0/7.5/5.0 MHz 2 m</p>
Linear	Micro-convex
 <p>HLS-575M 10.0/7.5/5.0 MHz 2.2 m</p>	 <p>HCS-452M 7.0/5.0/3.5 MHz 2.2 m</p>
 <p>HLS-475M 10.0/7.5/5.0 MHz 2 m</p>	 <p>HCS-5712M 9.0/7.5/5.0 MHz 2.2 m</p>
 <p>HLS-584M 11.0/8.5/6.0 MHz 2.2 m</p>	 <p>HCS-5710MR 9.0/7.5/5.0 MHz 2.2 m</p>
 <p>HLS-513M 12.5/10.0/7.5 MHz 2.2 m</p>	<p>※ Biopsy guide is an optional.</p>  <p>HCS-5710MR 9.0/7.5/5.0 MHz 2.2 m</p>

○ • Curvature Radius
○ • Scanning Width
□ • Length of Cable

The screen size of HS-2200 is 12.1 inches wide, bringing excellent visibility. The latest LCD technology has made it possible to have a very wide 170° viewing angle and brilliant high contrast image. It insures clear image anytime, anywhere.

Display Monitor Clearness

Simple & Useful Operation

All necessary functions come in one compact unit.
The compact body is easy to carry, so it is useful for not only in clinics or hospitals, but also for outside observation.
Simple menu system is speedy for daily use.



Carrying handle
Turns out for convenient portability.

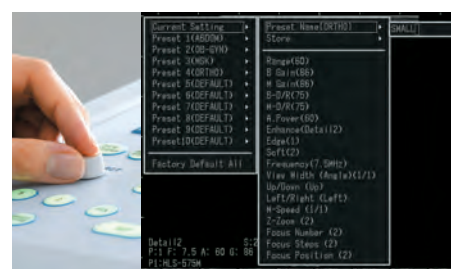


Full size keyboard with ergonomic design enables stress free operation.



Keyboard

Ergonomic design with backlit keys supports easy operation even in a dark examination room. Direct key function is also prepared.



Preset function

System setting can be assigned to function keys up to ten settings and can be easily recalled.

Smooth operation anywhere

Foldaway keyboard and LCD panel make for a slim style unit that is easy to carry.



Compact design

It fits in limited space with its slim style design.



World network

We have a worldwide distributor network and supports the after service and maintenance after sales. Please contact your local distributor. They always have direct connection to Honda Electronics.

Output

Image output signal is available in both PC format (SVGA) and TV format (NTSC/PAL)



USB memory usable

When a USB memory is inserted, records can be done directly into the USB memory. Moving images can also be stored to the USB memory in AVI format.



Made in Japan

This product is assembled in Japan. Honda produces even the ultrasound sensor ceramics in its own factory.