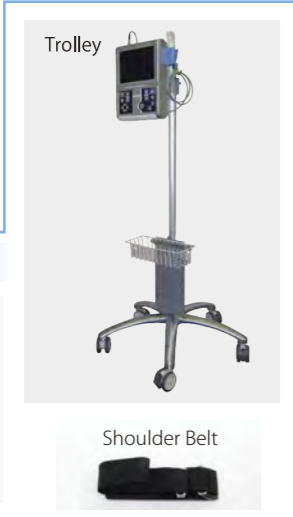
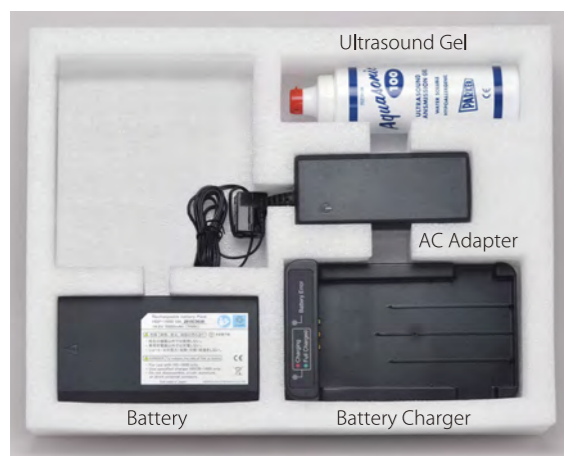


Dimension



Accessories



Option



Specifications

Scanning Method	Linear/Convex Electric Scan
Display Mode	B, B/B, B/M, M, B/Z
Range	
3.5 MHz	0 to 2-24 cm (1 cm step)
More than 5 MHz	0 to 2-16 cm (1cm step)
Beam Focus Method	Full Digital Method 4 Stages Transmission Focus Dynamic Receiving Focus
Ultrasound Frequency Rate	2.8 to 11.0 MHz
Display Monitor	8.4 inch Color Liquid Crystal (800 × 600 SVGA) Wide range viewing angle (Horizontal : 170° Vertical : 170°)
Image Display	Up/Down, Left/Right
Image Adjustment	B-Gain, M-Gain : 36 to 100 dB 1 dB step Dynamic Range : 35 to 95 dB 1 dB step STC : 5 styles Acoustic Power : 20% to 100% (10% step) γ correction : 5 types H-res(Image Enhancement) : OFF, Detail1, Detail2, Mild, Detail3, Resolution, Clarity, Boundary, Anatomy Sweep Speed : 5 steps
Doppler	CFM,PD
Display Area for Doppler	Vertical, Box
Cine Memory	255 frames
Measurement Function	Distance, Circumference, Area, Volume, Hip Joint, Histogram, Pregnancy week, Velocity, LV Calculation
Character Display	Hospital Name(40), Patient Name(30), ID(26), Age, Sex, DOB, Date, Time, Probe Type, Range, Gain, Acoustic Power, Frequency, Dynamic Range, Gamma, H-res, Gray Scale, Focus Information
Probe Connector	1
Dimension	220 mm(W) x 69 mm(D) x 308 mm(H)
Net Weight	3 kg approx. (Excluding Probe)
Power Source	AC Adapter 100 V to 240 V 50/60 Hz (63 VA) Battery 14.8 V 5000 mAh
Data Storage	Still Image(JPEG) Internal (100 image max) / External USB memory Still Image(DICOM) External USB memory Moving Image(AVI) External USB memory
Probes	Linear Probe (11.0/8.5/6.0 MHz 40 mm) HLS-884M Micro Convex Probe (9.0/7.5/5.0 MHz 12 R) HCS-8712M Convex Probe (5.0/3.5/2.8 MHz 60 R) HCS-736M Transvaginal probe (9.0/7.5/5.0 MHz 10 R) HCS-7710MV T-Shaped probe (11.0/8.5/6.0 MHz 15 mm+25 mm) HLS-882MT-F type
Accessories	AC Adapter, Power Cord, Battery Charger, Battery pack and Ultrasound Gel

# DIAGNOSTIC SCANNER

## Convex/Linear Ultrasonic System

# HS-1600

8.4 inch



JAPAN



Attention  
 •Contents of this catalog are as of January 26, 2023  
 •The specification and appearance are subject to change without notice for improvement.  
 •Actual colors of products and colors of this catalog may a little different cause of printing.



HONDA ELECTRONICS CO., LTD.  
 Medical Division  
 20 Oyamazuka, Oiwa-cho, Toyohashi  
 Aichi 441-3193, Japan  
 TEL: +81-532-41-2514 FAX: +81-532-41-4441  
 en.honda-el.co.jp/

Registered company for ISO9001/ISO13485/ISO14001

is the trademark of HONDA ELECTRONICS CO.,LTD.  
 This catalog is printed by vegetable ink on recycle paper.

<Contact>

23-152

For human practice  
 Advanced technology and excellent image  
 Quality embodied in stylish unit

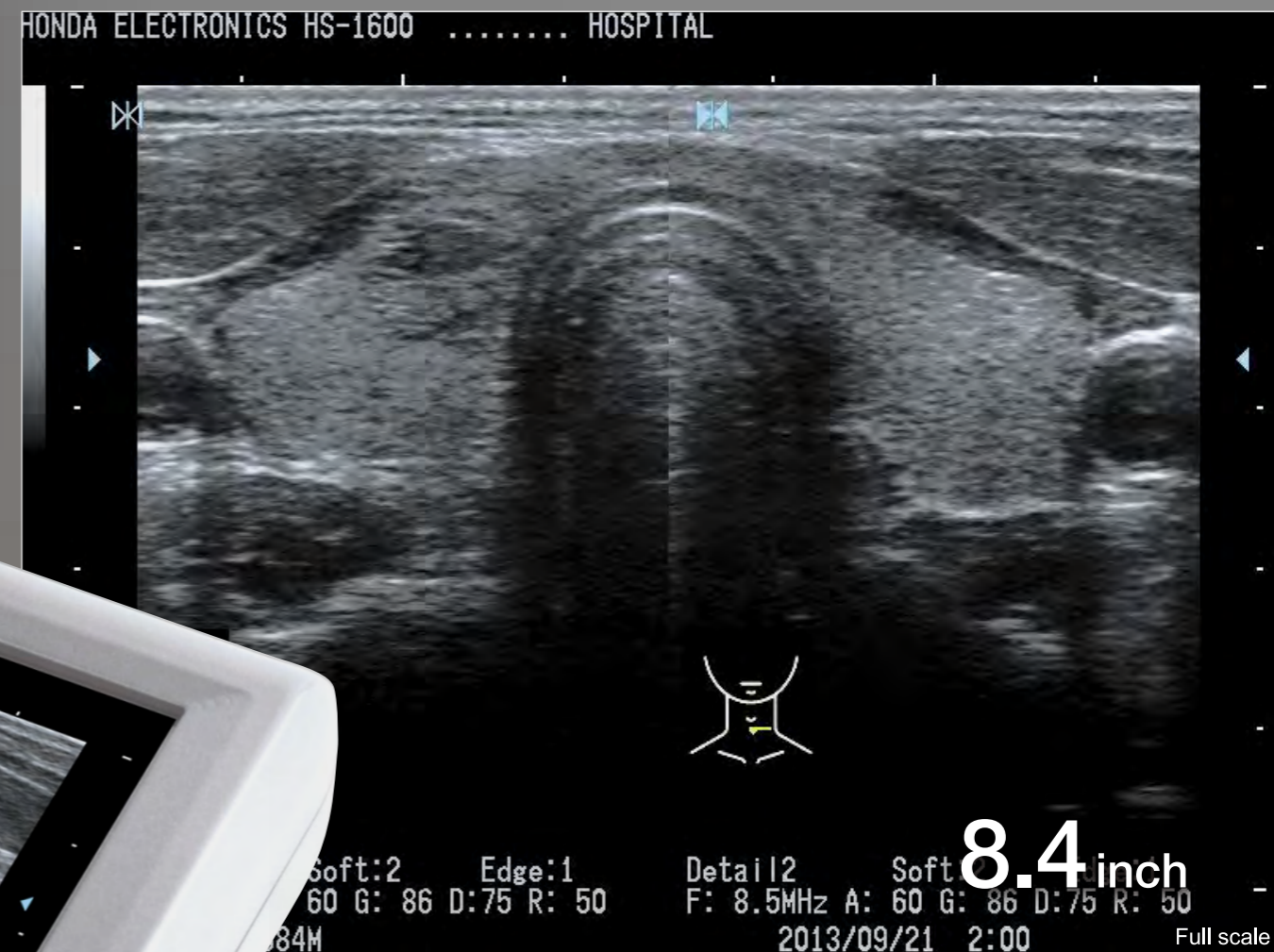


# DIAGNOSTIC SCANNER HS-1600

Ultrasound Diagnostic Scanner

Easy to carry light compact body of approximately 3kg,  
and reduce user's physical strains during scanning.

- Compact body, easy to carry
- High image quality by H-res technology
- Both battery and AC power usable
- High performance LCD
- Easy key operation
- Variety of measurement functions
- Easy operation of image storage



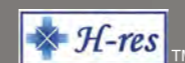
## Excellent ultrasound images

Mobile body with high image quality of  
ultrasound diagnostic that representing scanning  
region in detail.



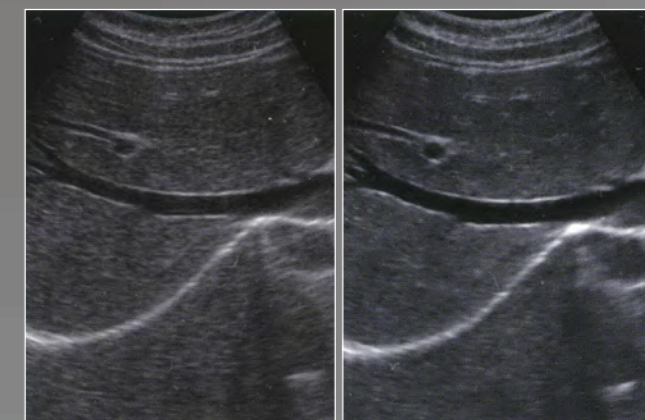
## Clear + Contrast Harmonic Imaging

Harmonic imaging technology eliminates the side lobe artifact  
and brings the clear and identical image of organs with good  
contrast.



## Our original image enhancement technology H-res (Our Resolution Technology)

Advanced image enhancement technology,  
"H-res", brings perfect solution for visibility.  
Detail 1 realizes good resolution in deeper  
organs. Detail 2 visualizes delicate tissue  
structure in shallower region. Detail 3  
visualizes bones for observation. Mild reduces  
the image enhancement effect. You can also  
turn it OFF to have direct ultrasound image.

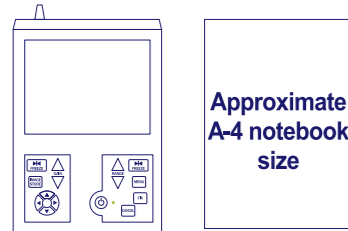


Mobile body without compromise  
Image quality enables proper diagnosis

# Mobility & High Quality

## Compact body, easy to carry

Easy to carry light compact body of approximately 3kg and reduce user's physical strains during scanning.



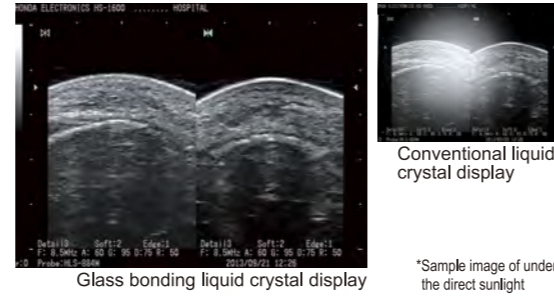
Approximate  
A-4 notebook  
size

## Both battery and AC power usable

Integrated high performance lithium ion battery in the body realizes 3 hours use in the place without power supply. Equipped report function of battery lasting time makes battery sign lights to inform when lasting time becomes short.

## Usable in any places

High luminance liquid crystal display with glass bonding treatment enhances visibility, diagnosis images are clearly projected even under the direct sunlight. Liquid crystal display gets no fogged even when temperatures and humidity varies rapidly.



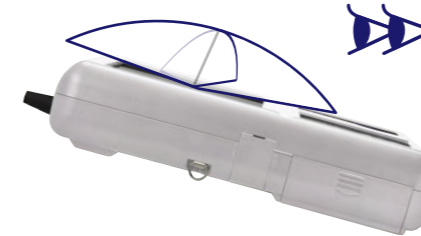
Glass bonding liquid crystal display

Conventional liquid crystal display

\*Sample image of under the direct sunlight

## Wide range of 170°viewing angle

Wide viewing angle liquid crystal display has 170°angle in horizontal and vertical. It made free angle diagnosis possible in limited operating environments.



# Variety Probe

Broadening diagnosis applications by clear ultrasound images  
Wide range of probe selection

## Convex

Doppler



60R

**HCS-736M**  
5.0/3.5/2.8 MHz

## Linear

Doppler



40mm

**HLS-884M**  
11.0/8.5/6.0 MHz

## Micro-convex

Doppler



12R

**HCS-8712M**  
9.0/7.5/5.0 MHz

## Transvaginal

Doppler



10R

**HCS-7710MV**  
9.0/7.5/5.0 MHz

※This probe is not for sale in European Union.

## T-Shaped

Doppler



15mm  
+  
25mm

**HLS-882MT-F type**  
11.0/8.5/6.0 MHz



# Mobility & High Functionality



## Doppler functions

Honda Color Flow Mapping (CFM) and Power Doppler (PD) functions do not degrade Black and White image quality when in use.



## Measurement functions

Scanning images and measurement result can be stored under the database with easy operation.

## Body mark

\* Sample pictures

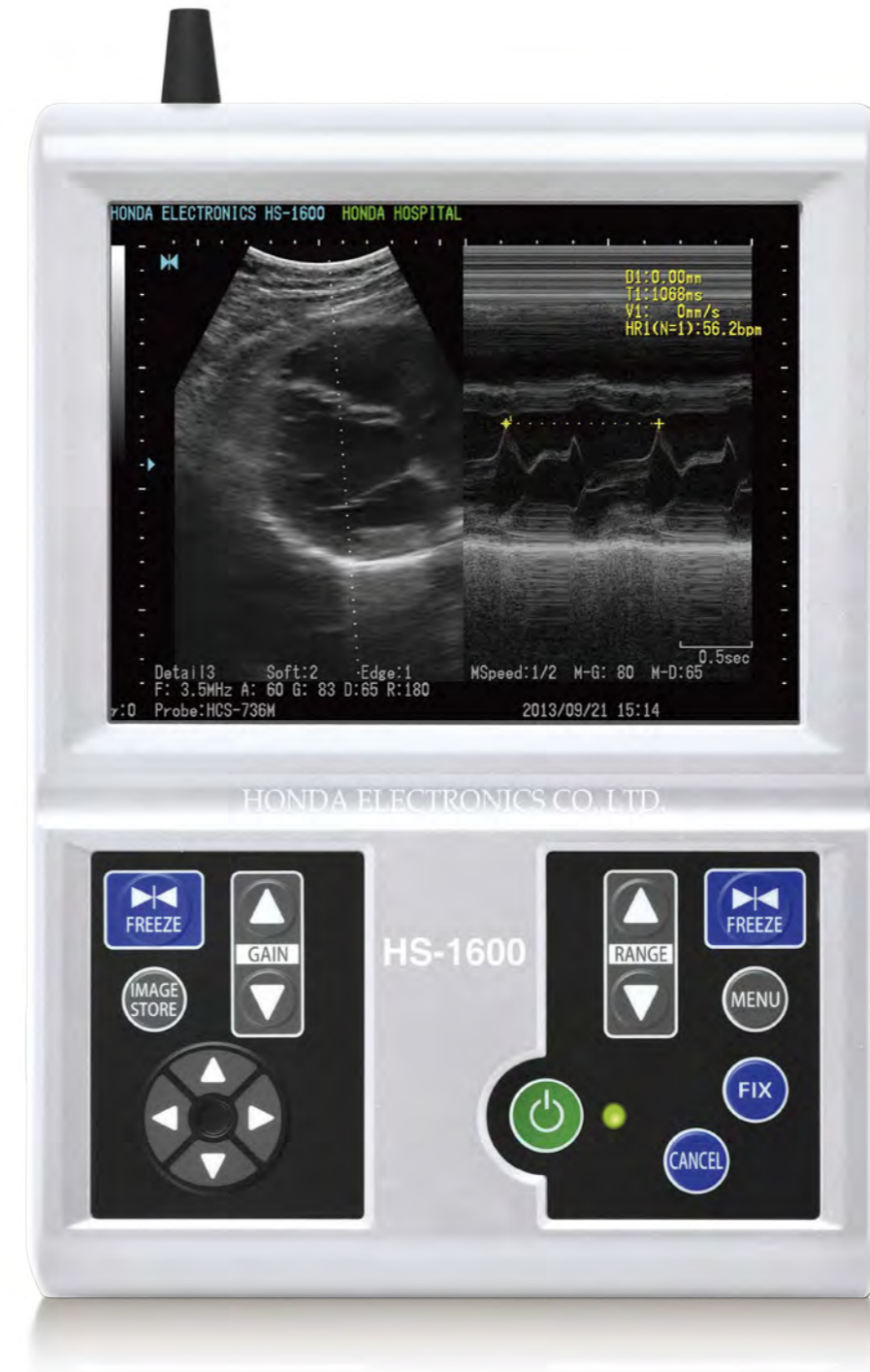
Variety of body marks are prepared to support various diagnostic scenes.



## USB



Movie file and still image can be stored to the USB memory and accessed in personal computers. Approx. 100 images are stored in the system memory.

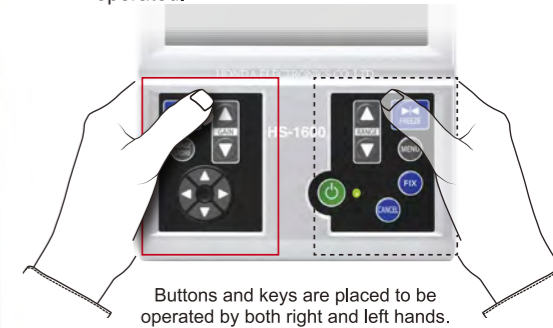


## Clear and finest ultrasound image and wide view angle

Introducing glass bonding liquid crystal display. LCD and cover glass are bonded by a special technique and no air layer in between; it leads high visibility and prevents condensation.

## Simple operation

Minimum number of operation buttons or keys made interface simpler, and easily operated.



Buttons and keys are placed to be operated by both right and left hands.



**Pursuing high performance and user-friendliness**  
**Expanding scanning possibilities by various functions**

## Variety of setting menu

Variety of measurement functions –distance, area and volume- are employed focusing on obstetrics measurement. It has ultrasound scanning mode, B, B/B, B/M, M, B/Z.

## Simple operation of image storage

Diagnostic images are easily stored in system memory and USB memory. Saved images in USB memory are accessible by personal computer. Saved images can be administrated in hospitals as diagnostic record.

## Main applications

- OB/GYN diagnosis
- Abdominal diagnosis
- Thyroid, Accessory thyroid, Carotid, and Cervical vein diagnosis
- Musculoskeletal diagnosis
- Diagnosis by house visit
- Brief measurement in the emergency vehicle



## Made in Japan

This product is assembled in Japan. We produce even the ultrasound sensor ceramics in its own factory.