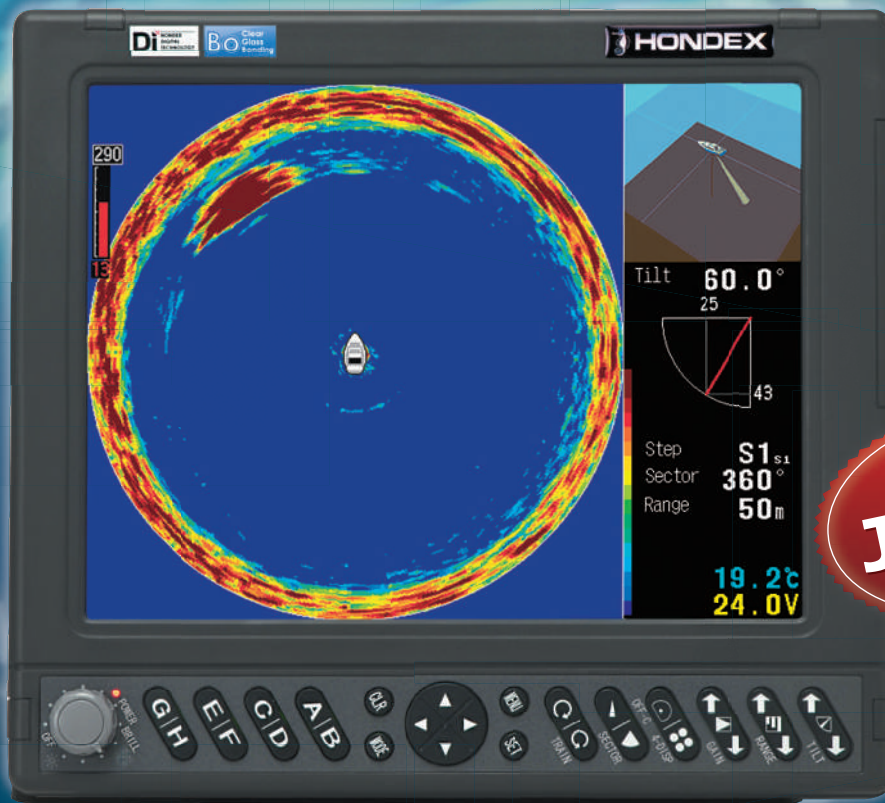


## Next Evolution of Commercial Fishing

Ultra-Compact & Cost-Effective Multi-Scanner

PURE QUALITY with VALUED PRICING AS ALWAYS! = HONDEX

**Di** HONDEX  
DIGITAL  
TECHNOLOGY



### 10.4" Digital Multi-Scan Echo Sounder

# HE-773IV-Di



Select One from 2pcs Superb Soundomes

**TD304**

Wide-Band Multi-Frequency : 140-240kHz

**TD303**

Standard Fixed Frequency : 290kHz

# HE-773IV-Di

## Specifications

Display	10.4" Color TFT LCD
Number of Pixel	640 X 480
Operating Voltage (Main Unit)	11-30V DC
Input Voltage (Auto-Hoist)	24V spec.
Power Consumption	27W
Display Mode	Sonar Mode (4-Display Mode/Off-Center Mode) Bottom Sonar Mode (4-Display Mode/Off-Center Mode) Sounder Mode
Transducer (Hull Unit)	Manual or Auto
Output Power	1kW
Frequency	TD304 Wide-Band : 140-240kHz TD303 Fixed : 290kHz
Operating Range	0 ~ approx.300m
TD304	15m Cable Length
TD303	12m Cable Length

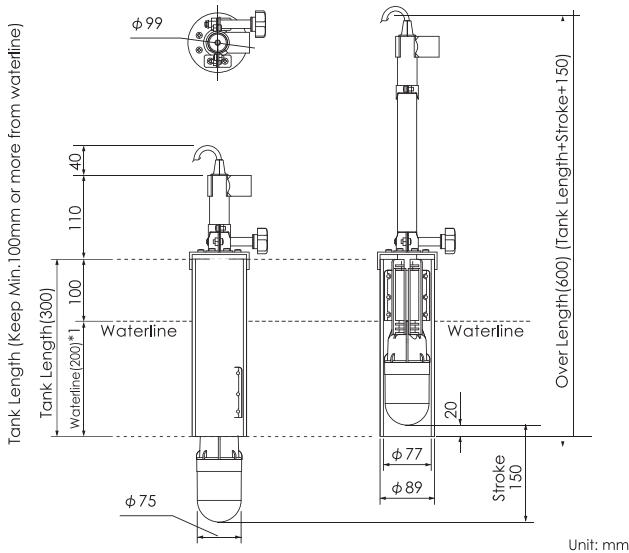
## Dimension

### Hull Unit: Manual Hoist

Weight: Approx.1.8kg

#### Case of minimum-size drawing when the waterline is 200mm.

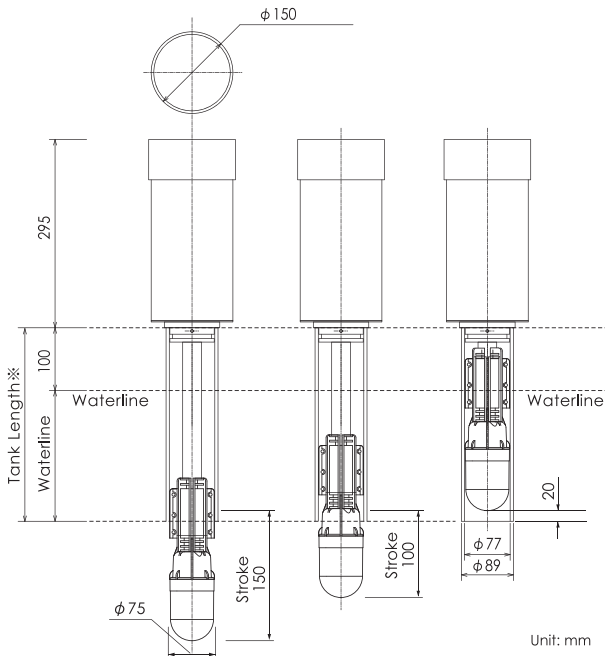
\*1: Keep the tank length of 300mm or more even if waterline is below 200mm.



### Hull Unit: Automatic Hoist

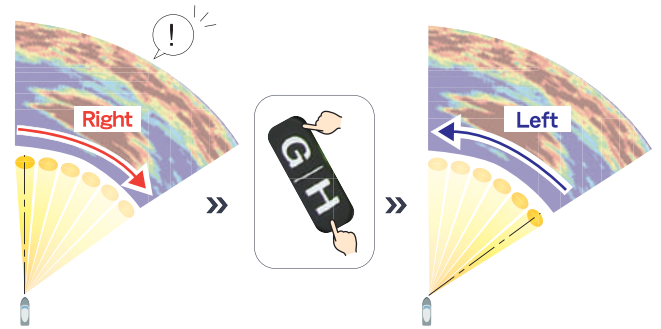
Weight: Approx.4.5kg

- ※1: Tank pipe should be min. 50mm higher than waterline.
- ※2: Tank pipe should be min. 330mm or longer.



## Counter-Rotating Sensor Function (NEW)

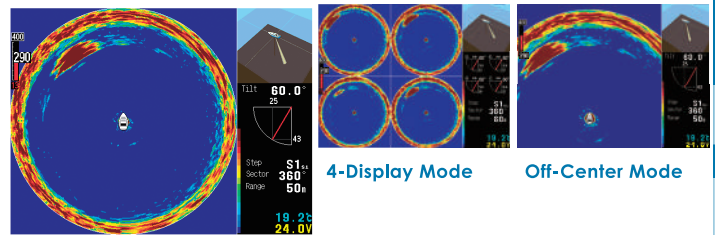
Possible to rotate the sensor in opposite direction by pressing G/H key. This function enables the quick double-check on fish school.



## Display mode

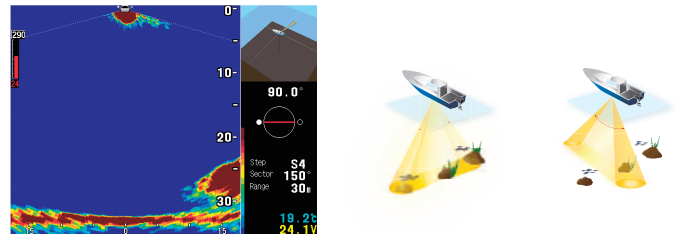
### Sonar Mode

Possible to detect wide range by rotating the transducer. The detection range (scanning sector) can be selectable to cover from narrow to whole circle. Also, possible to select 4-Display Mode and Off-Center Mode.



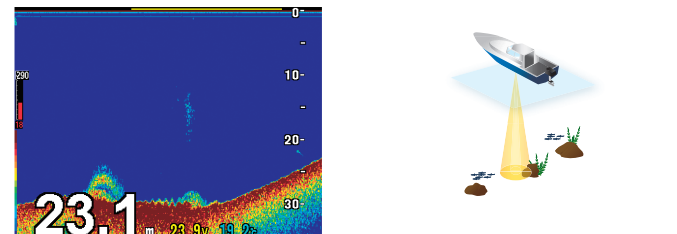
### Bottom Sonar Mode

Sea floor condition or fish school are easily detected and shown as cross-section view by rotating the transducer with motor. Also, possible to select 4-Display Mode and Off-Center Mode.



### Echo Sounder Mode

Display the bottom shape and fish school information just like conventional fishfinder.



Specifications are subject to change without notice.



HONDA ELECTRONICS CO., LTD.

20 Oyamazuka, Oiwa-cho,  
Toyohashi, Aichi 441-3193, Japan

TEL: +81-532-41-2512

<https://www.honda-el.co.jp/en/marine/>

HONDEX® is the registered trademark of HONDA ELECTRONICS CO.,LTD. in the United States, Japan and other countries.

